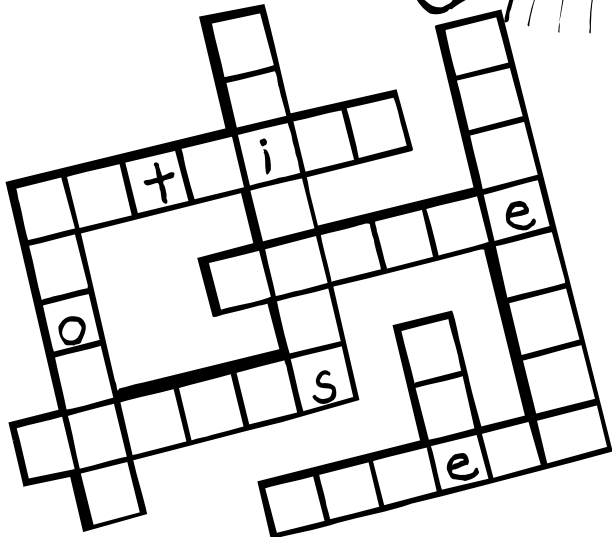


Jesus had a lot to say about how we treat one another. If he had been talking to kids, he might have put it like this . . .

Some of the words are missing a letter. Correct them and fit them into the crossword.

WHEN YOU INVIT SOMBODY TO PLAY OR SPEND THE NIGHT, DON'T ALWAYS INVITE FRIENDS. TRY HAVING A NEW KID, OR A LONELY ONE OVER. AND DON'T BRAG ABOUT HOW GREAT YOU AR, BUT TRY PUTING OTHERS FIRST AND BEING KIND TO OTHER PEPLA.



Kidsword

Epiphany Week 7, Year A
Ordinary Time, Week 7

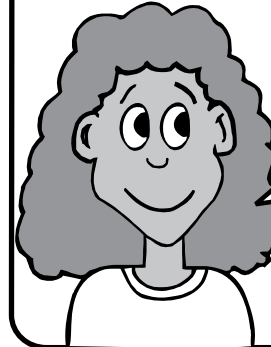
Matthew 5

February 23, 2014

GRACE:

Treating others with kindness and believing that they are just as worthy as you are of love, understanding, and forgiveness, and being eager to show them these things.

List several ways you can show grace to others.

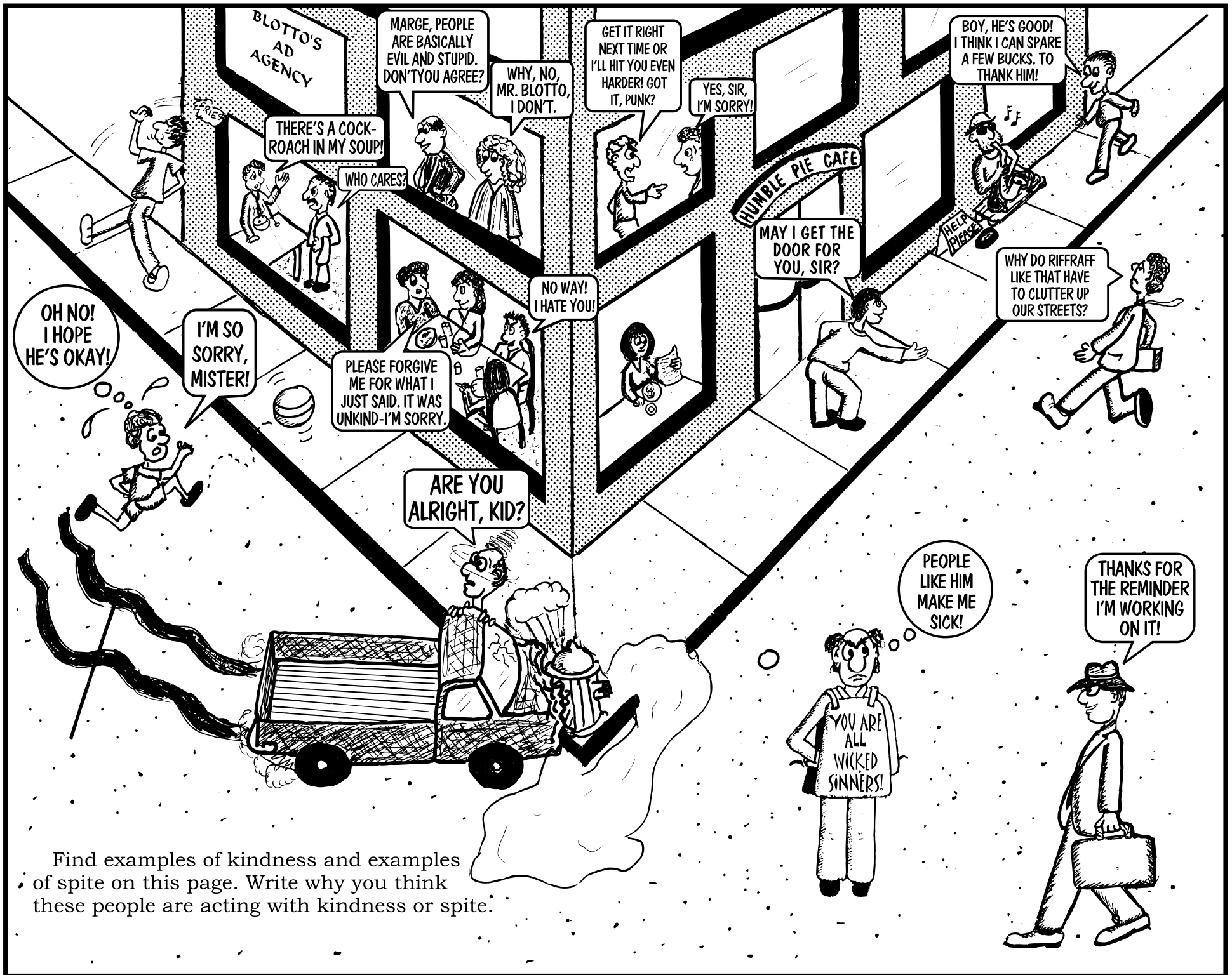


SPITE:

Unkindness, or always wanting to keep things “even,” but not in a good way. “Paying others back” when you feel you’ve been mistreated can cause more harm. It is usually better to repay others with kindness. (But it is also a very good idea to tell an adult if someone is bullying others.)

List some ways that people can be unkind or behave with spite, then write what a good response might be.





Find examples of kindness and examples of spite on this page. Write why you think these people are acting with kindness or spite.